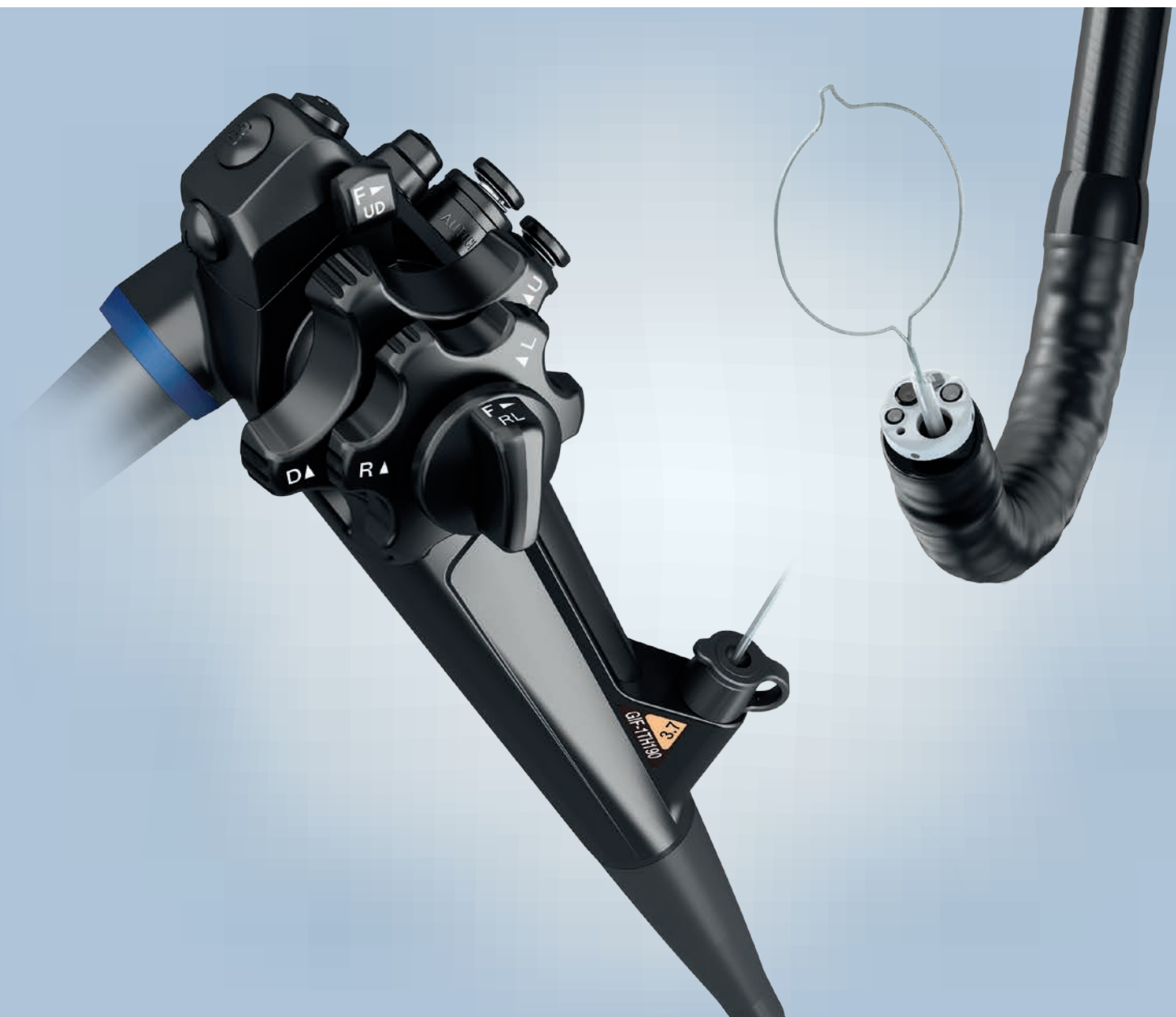


GIF-1TH190

Therapeutic HDTV Gastroscope with a 3.7 mm Instrument Channel.



Main Features

HDTV Image Quality

HDTV image quality delivers high-definition observation capabilities, even in a new, slimmer scope design.

NBI (Narrow Band Imaging)

The GIF-1TH190 provides twice the viewable distance of conventional EVIS EXERA II 180 series scopes and is significantly brighter. HD NBI provides contrast, which may aid in the interpretation of mucosal morphology, vascular patterns, and blood vessel appearance in patients with Barrett's esophagus.

Slim Design and Therapeutic Capability

The 10.0 mm distal end diameter is 0.9 mm smaller than the predecessor – while still maintaining the flexibility of a 3.7 mm instrument channel diameter.

Close Focus

The GIF-1TH190 enables close observation of the mucosal surface (2.0 mm) without the need for electronic magnification.

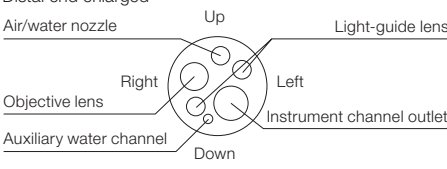
Water Jet

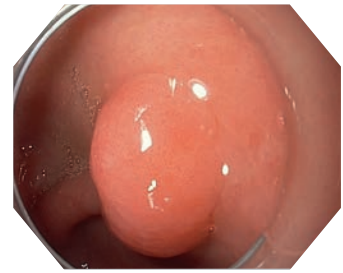
A forward water jet helps to keep the mucosa clear during observation and treatment.

Waterproof One-touch Connector

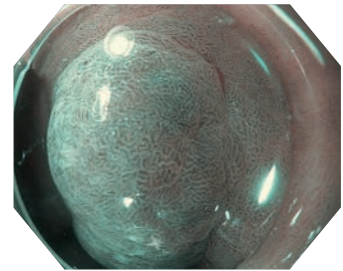
A new connector design minimizes the effort required for setup prior to and in between cases. In addition, it is fully submersible and eliminates the need for a water-resistant cap and the associated risk of an expensive repair due to accidental immersion.

Specifications

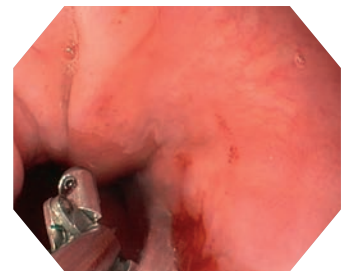
Optical system	Field of view	140°
	Direction of view	Forward viewing
	Depth of field	2.0 -100 mm
Insertion section	Distal end outer diameter	10.0 mm
	Distal end enlarged	
		
	Insertion tube outer diameter	10.9 mm
	Working length	1,030 mm
Instrument channel	Channel inner diameter	3.7 mm
	Minimum visible distance	3.0 mm from the distal end
	Direction from which EndoTherapy accessories enter and exit the endoscopic image	



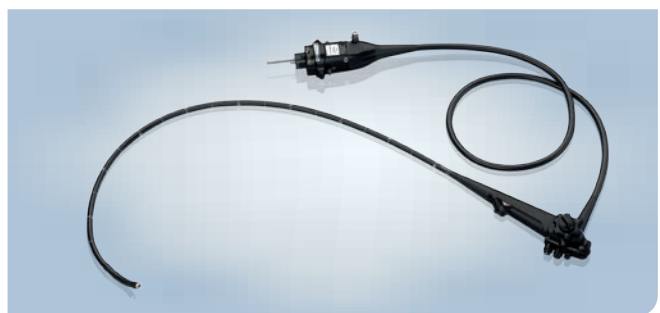
HDTV image
Image courtesy of Robert H. Hawes, MD



NBI image
Image courtesy of Robert H. Hawes, MD



Water Jet image
Image courtesy of Horst Neuhaus, MD



Bending section	Angulation range	Up 210° Down 90° Right 100° Left 100°
	Total length	1,350 mm
	Compatible	Video system center OLYMPUS CV-190
	EVIS EXERA system	Xenon light source OLYMPUS CLV-190

Specifications, design, and accessories are subject to change without any notice or obligation on the part of the manufacturer.